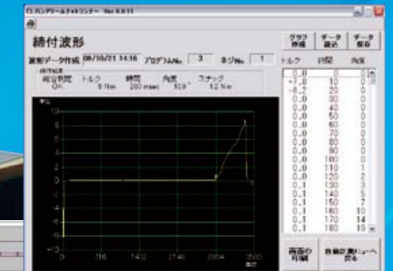


ERGONOMICS
ERGONOMICS

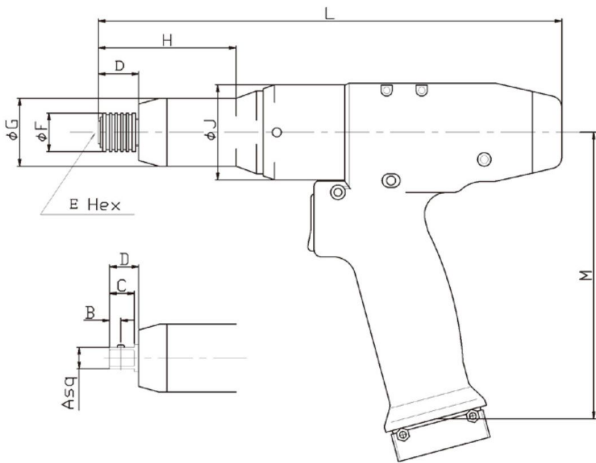
A collage of various industrial tools. At the top left is a long, black pneumatic rod with a silver band. Below it is a black torque wrench with a silver band. To the right is a yellow heat treatment unit with a black dial and the brand name 'GIKEN'. In the center is a black heat gun with a silver nozzle. To the left of the heat gun is a black power drill with a silver band. At the bottom right, a hand in a blue sleeve is using a black tool to work on a large, silver metal part. The background is blue with white curved lines.

TRACEABILITY

[illegible]

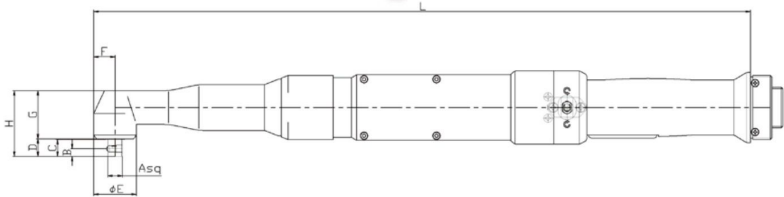
dimension table

Pistol



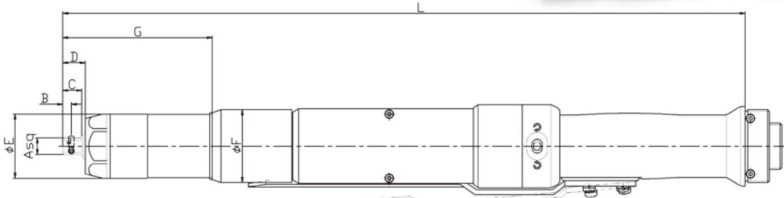
Model No	A sq	B	C	D	E Hex	φ F	φ G	H	φ J	L	M	Weight (kg)
GP- 15 Hex Bit	-	-	-	18	6.35	17	30	61	42	205	127	0.75
GP- 15 Shank	9.52	5	11	13	-	-	30	56		200		
GP- 30							37	85		250.7		

Angle



Model No	A sq	B	C	D	φE	F	G	H	L	Weight (kg)
GA-30	9.52	5	11	12	28	14	32	43	430.6	1.4
GA-50					32	16	35	47	444.1	1.5
GA-50H					35.5	17.75	41	53	526.9	2.3
GA-70	12.7	8	16	16.5	35	17.5	41	57.5	469.6	1.9
GA-70H					40	20	43.5	60	536.7	2.6
GA-100					40	20	47	63.5	538.1	3.0
GA-200				18	53	26.5	57.5	75.5	576.6	4.0
GA-300	19.05	10	20	20.5	62	31	61.5	82	599.1	4.4

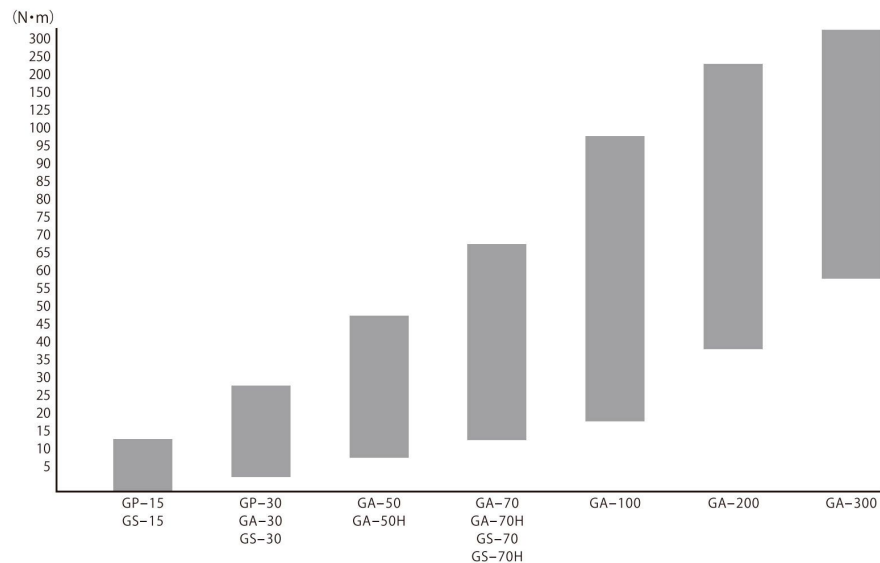
Straight



Model No	A sq	B	C	D	φ E	F	G	L	Weight (kg)
GS-15	9.52	5	11	12	32	42	66	341.6	0.9
GS-30	9.52	5	11	13	37	42	86.5	394.6	1.3
GS-70	12.7	8	16	17	38	42	115	423.6	1.4
GS-70H					47	53	96.8	473	2.5

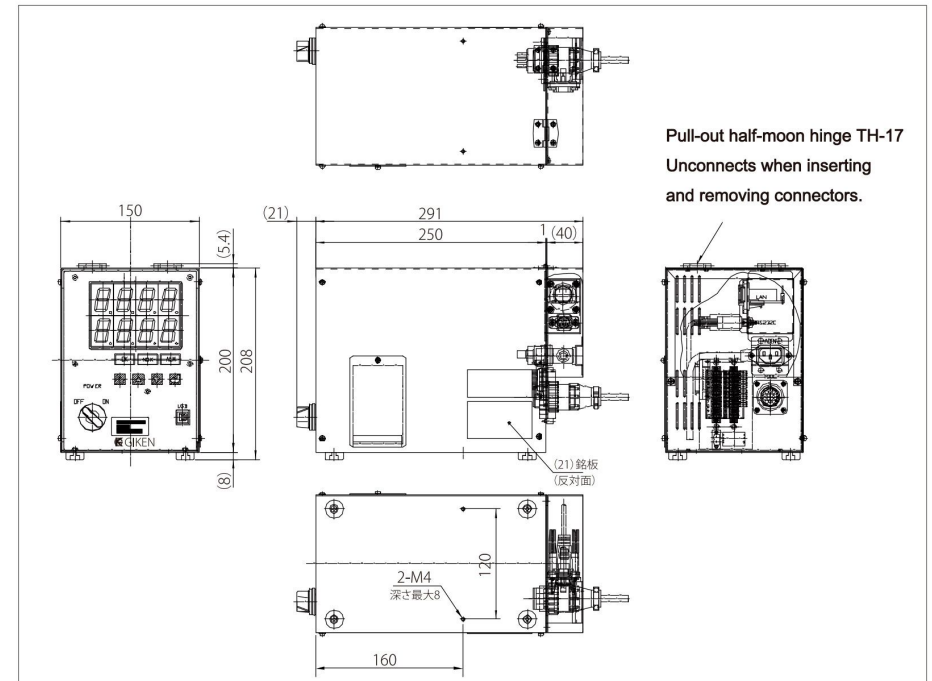
BASIC SPECIFICATION

Tool Type	Tool Model	Proper Torque At 200V (Nm)	Proper Torque At 100V (Nm)	Maximum Torque (Nm)	Maximum RotationSpeed (rpm)	Controller
Pystol	GP-15	3~13	3~13	15	1250	GP-T1-N05-M
	GP-30	6~27	6~24	30	950	GA-T1-N05-M
Angle	GA-30	6~27	6~21	30	800	GA-T1-N05-M
	GA-50	10~45	10~35	50	470	GA-T1-N05-M
	GA-50H	10~45	10~35	50	935	GA-T5-N04-M
	GA-70C	15~63	15~43	70	400	GA-T1-N05-M
	GA-70H	15~63	15~43	70	740	GA-T5-N04-M
	GA-100C	20~90	20~68	100	500	GA-T5-N04-M
	GA-200C	40~180	40~139	200	220	GA-T5-N04-M
	GA-300C	60~250	60~185	270	145	GA-T5-N04-M
Straight	GS-15	3~13	3~13	15	1250	GA-T1-N05-M
	GS-30	6~27	6~24	30	950	GA-T1-N05-M
	GS-70	15~63	15~55	70	300	GA-T1-N05-M
	GS-70H	15~63	15~55	70	760	GA-T5-N04-M



DIMENSION TABLE

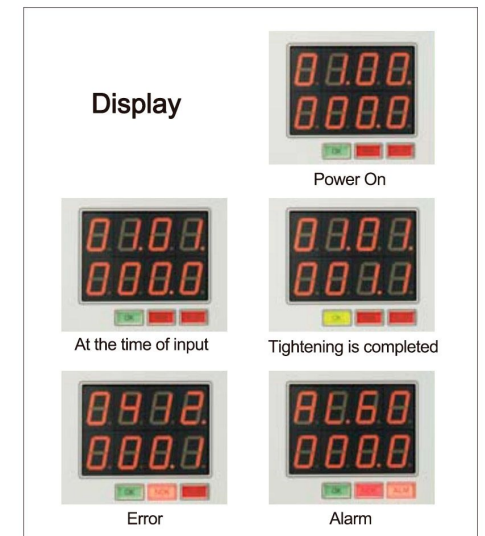
Controller



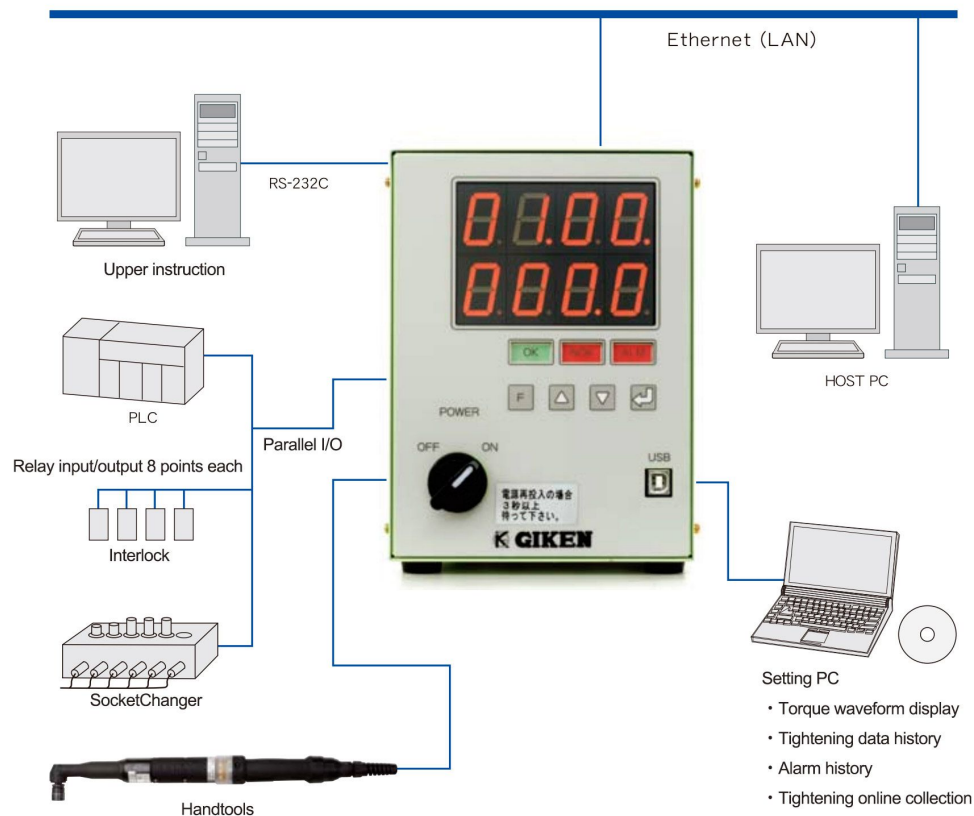
Front



Back



CONTROLLER (SYSTEM CONFIGURATION)



High performance and Multi-functionality

High-speed tightening, high-speed seating: Built-in motor performance and high-speed response software

Programs for various types: 24 models, switchable by an external signal

Algorithm of tightening reaction force: Soft stop control, soft gradient control, pulse control

Block tightening: count setting of tightening times, number of blocks: 20

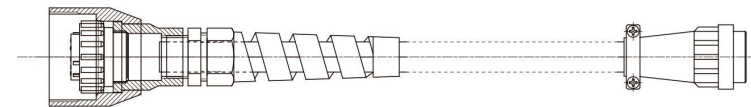
External communication network: Standard RS-232C, Ethernet, parallel I/O, fieldbus support as an option

Built-in tightening data history function: Number of data: 6000, number of abnormal alarm history: 20

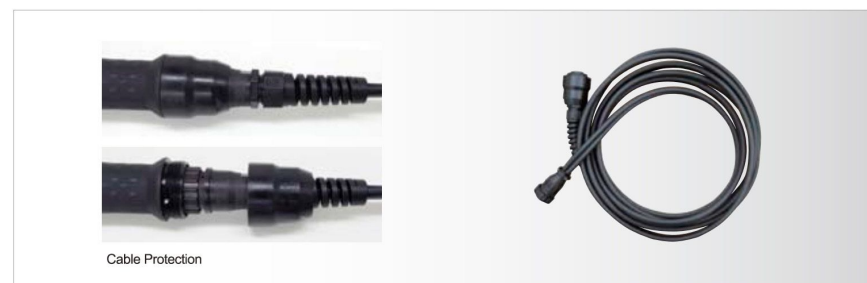
CABLE

A compact, lightweight , flexibility robotcable

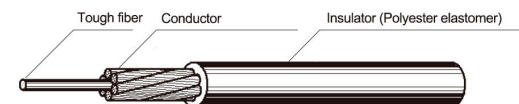
5m Cable (GPR-K-5M)



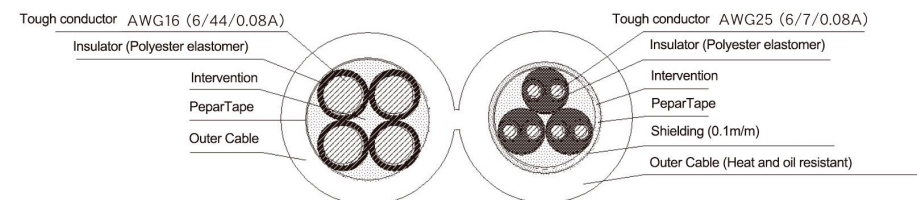
15m Extend Cable (GPR-KL-15M)



Structure of tough conductor



Structure



SETTING SCREEN

TIGHTENING CONTROL

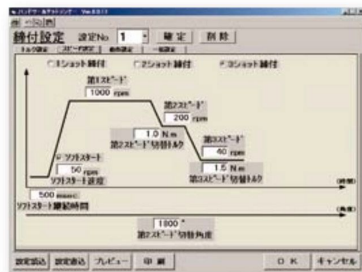
Operation control during tightening



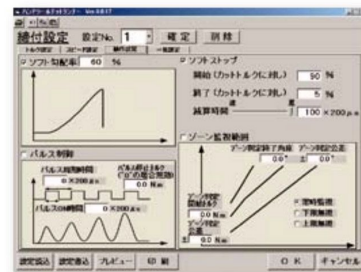
Main menu



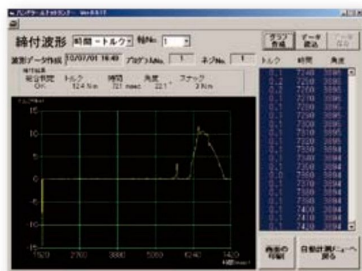
Torque setting



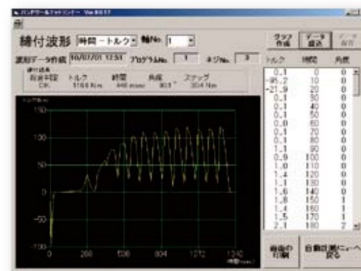
RPM setting



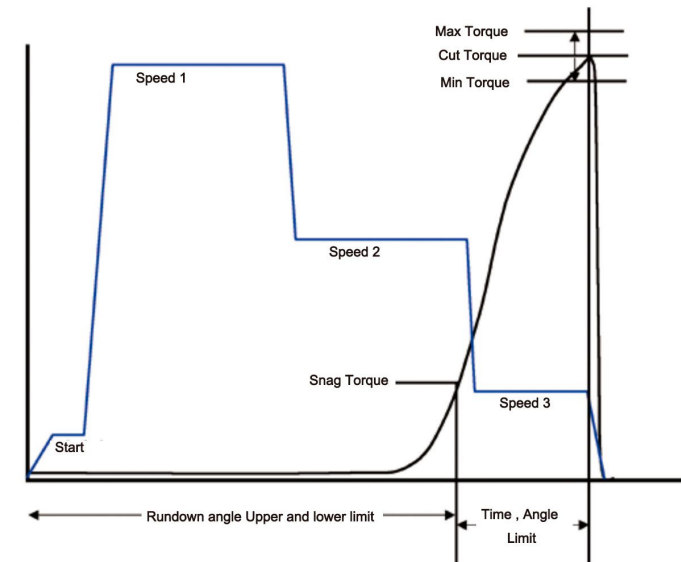
Control setting



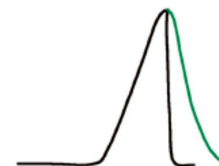
Tightening waveform (normal)



Tightening waveform (pulse)

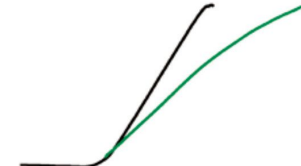


Soft stop control



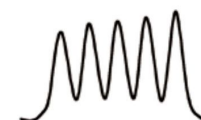
Slow down the motor stop after tightening to reduce the reaction force.

Soft slope control

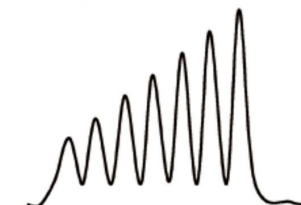


By gradually increasing the ability to reach the tightening torque, the reaction force until the end of tightening is reduced.

Pulse control



By turning the motor current on and off, the feeling of hitting is tightened and the reaction force is reduced.



It is possible to tighten while gradually increasing the striking force by setting the combination with the soft gradient.

SPECIFICATIONS

High functionality, high accuracy, high durability, reliability.

Unit configuration that supports tightening work



● High brightness LED lamp

The status of the tool is displayed by a lamp and notified by a buzzer.



● Motor

A motor developed for hand tools. It is a powerful motor of 4pin resolver.



● Torque sensor

Noise countermeasures, built-in amplifier.



● Start trigger

You won't get tired even if you work for a long time. The forward / reverse switch prevents malfunction during work.



● Angle head

Precision design, durability.
It is a gear that eliminates the torque loss.



● Connector

The number of pins can be reduced by link communication, and connections can be made easily. Strong against drops and impacts.



● Basis

IC board installed inside the tool. Equipped with link communication function.



● Reduction gear

By applying nut runner technology, a mechanism with high output and excellent durability is adopted.

ACCESSORY

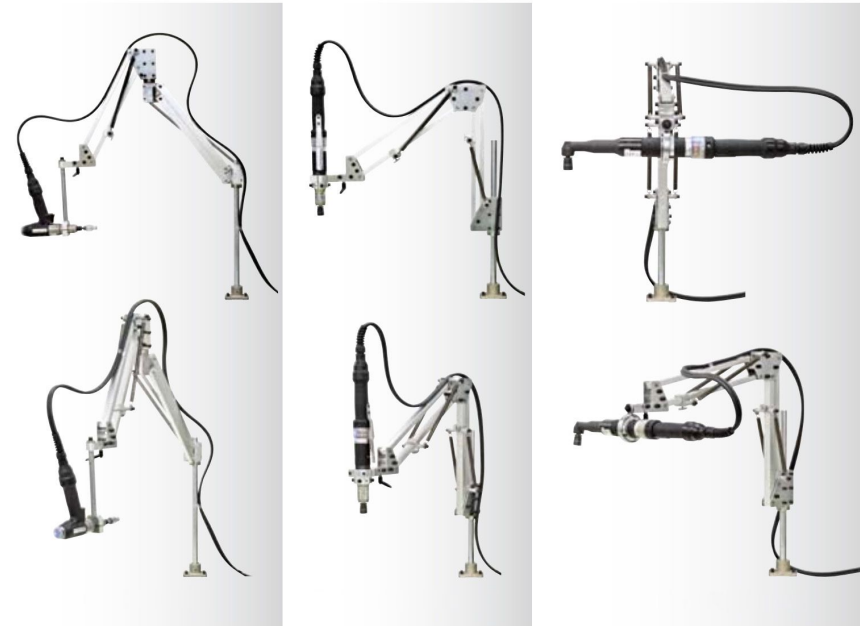
Protective cover for Pistol type



hook for hanging



Parallel arm



Other



We can design and provide in response to customer requests.

Programming socket folder

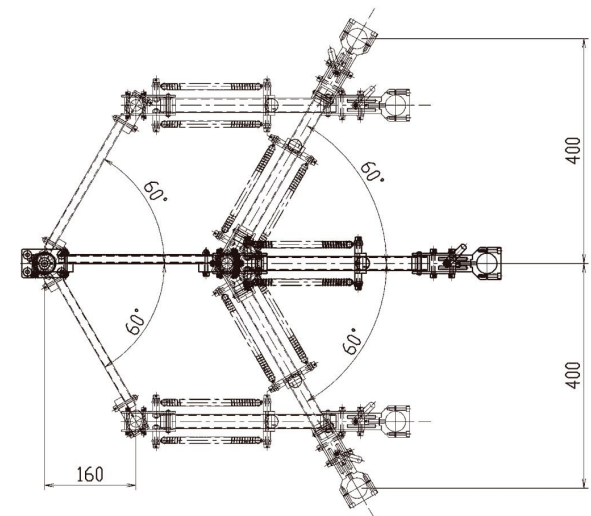
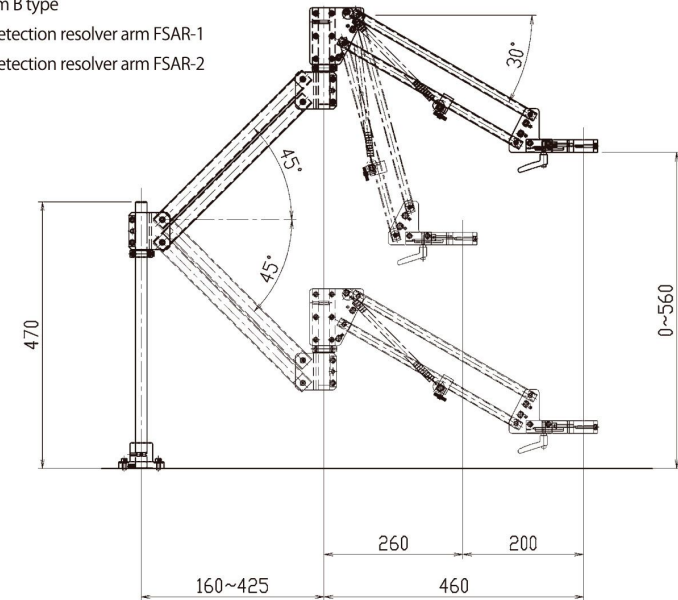


The program is automatically selected by taking out the socket to be used. (At Parallel I/O)

DIMENSIONS

Parallel arm

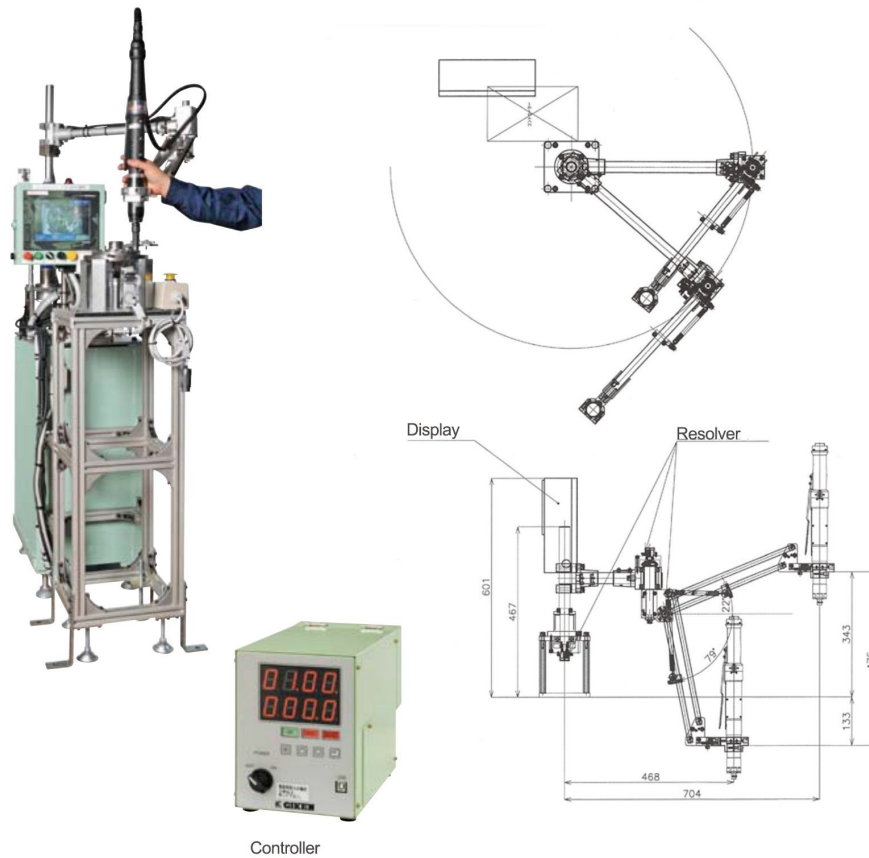
- Parallel arm A type
- Parallel arm B type
- Position detection resolver arm FSAR-1
- Position detection resolver arm FSAR-2



Type A

Parallel arm system with tightening coordinate detection

GSAR



Overview

- Positional XY coordinate accuracy of ± 0.02
- System eliminates the possibility of forgetting to tighten bolts or making errors, resulting in zero output of defective products.
- The arm reduces the reaction force and the weight of the tool, making it easier to work with.
- The controller has a built-in coordinate calculation function.
- The controller is compact and inexpensive with a built-in coordinate calculation function.
- Coordinate setting is easy and simple.
- Can be used for QL process in the defect process

Example

